



# BOWLES J5 REDS 19TH ANNUAL PRODUCTION SALE APRIL 29, 2024 AT 2:00 P.M.

**LUNCH AT NOON WITH KLINGAMAN RED ANGUS**

## **Bear Paw Livestock** Chinook Montana



**•45 Red Yearling Bulls**

**•25 Commercial Yearling Home Raised Heifers**

Bidding online at  
[DVAuctions.com](http://DVAuctions.com)

**DVAuction**  
Broadcasting Real-Time Auctions

For a catalog or more information  
call Brady 406-353-7085 and 406-357-3346  
12995 Paradise Valley Rd, Chinook, MT 59523  
e-mail: [bbowlesj5@yahoo.com](mailto:bbowlesj5@yahoo.com)

Check us out at [bowlesj5reds.com](http://bowlesj5reds.com) and Facebook Bowles J5 Reds

Bidding online at  
[LMAuctions.com](http://LMAuctions.com)



## **AUCTIONEER**

**Kyle Shobe**

United Country Shobe Auction & Realty

408 W. Main

Lewistown, MT 59457

Cell: (406) 366-0472

Office: (406) 538-5125

## **SALE DAY PHONE & REPS**

**Brady Bowles**

(406)353-7085

**Matt Wznick**

Western Ag Reporter

(406) 489-2414

**Ryan Jensen**

(406)399-1113

**Travis Buck**

(406) 390-0555

## **GENERAL HEALTH**

All bulls will have a general health and fertility exam, performed by a licensed veterinarian, prior to the sale. All bulls are sold as guaranteed breeders. Heifers are guaranteed open and have been Bangs vaccinated and had preg guard 10. For re-vaccinating bred cattle always use a killed vaccine. Health certificates will be obtained for interstate transportation, if necessary. Arrangements for any other health requirements will be made sale day, according to terms agreed upon by both buyer and seller. All semen and bull soundness exams performed by Dr. Lane Schmidt DVM.

## **TERMS OF THE SALE**

Terms of the sale are cash. All settlements will be made with the clerks of the sale immediately following the sale and before the cattle are released. See additional terms and conditions on the inside back cover of this catalog.

## **BRAND INSPECTIONS**

Brand inspections will be available at the yards on sale day.

## **HOTELS & ACCOMMODATIONS**

Chinook Motor Inn and Lounge 406-357-2248

## **GUARANTEES**

All bulls are sold as guaranteed breeders. All heifers are sold guaranteed open. Additional terms and guarantees are included in the terms and conditions at the back of the catalog.

## **DELIVERY**

Free delivery on bulls for the first 300 miles, All other deliveries at cost. There is a \$50 per head rebate on bulls taken home on sale day. Any animals left for delivery will be delivered from the yards the day after the sale or returned to the Seller's ranch to be delivered within a week of the sale date in accordance with the Seller or picked up by the Buyer in accordance with the Seller. There will be no free delivery on heifers, arrangements need to be made or they will be delivered at cost.

## **ABSENTEE BIDDING**

Absentee bidding may be made in confidence with any representative listed and will be handled in the strictest of confidence.

*Announcements from the block take precedence over printed matter in this catalog.*





# CALVING SUPPLEMENTS

Last trimester and calving to breed-back interval is the most critical time for cow nutrition.

Vitamin and mineral supplement support:

- ✓ *Reduced calving problems*
- ✓ *Newborn calf vigor*
- ✓ *Improved colostrum quality*
- ✓ *Overall calf health*
- ✓ *Improved breed-back*



*we offer the following:*



406-399-1113  
milkriverag.com  
Chinook, MT

*Talk to us about delivery options to your ranch!*

**Crystalix** - molasses based lick tubs containing protein and vitamin and mineral package.

**Beef Pro** - available in molasses bio-barrel tubs, 33# blocks, or granular. Contains biuret for balanced protein release. 35 - 100% protein, vitamin and mineral package.

**Granular mineral** - Bio Range and Blueprint both over 100% organic (chelated) trace minerals for complete absorption, with no antagonistic effects



### Cake and Pellets (Bulk or Bagged)

- 16% - 30% Range Cake
- Calf Grower Pellets
- Bull Developer Pellets

### 4-H Market Animals

#### *Show-rite feeds and supplements*

- Beef
- Swine
- Lamb

---

---

# *Welcome to the 19th Annual Bowles J5 Reds Production Sale*

*I believe that we have a very nice representation of bulls and heifers this year of what we are striving to produce in our cowherd. Every bull and heifer in our sale is sound of body and mind, you don't have to question whether or not if you can trust our cattle. We will not abide bad attitudes or bad structure, we want straight top lines, wide based cattle, with great style and muscle expression that perform in all facets of the beef industry.*

*Our bulls are developed on a high grass home grown ration and 8 lbs of bull developer pellet to help build the proper foundation for them to succeed for years ahead. This is a great dispositioned set of bulls; it has been a pleasure to be around them. It has been a tough year to keep our bulls as clean as we would like them to be, so they are a bit crusty but at least we have had enough moisture to make it muddy. We run with kids and old folks around here so quality disposition and healthy respect is a must on all of our bulls.*

*Our heifer offering is a group of 25 all home raised and developed straight red and sound girls that will be averaging about 750-775 lbs on sale day. They are the epitome of what our program is built around structure with balance of thickness shape and maternal look.*

*Thank You to all of our customers for your continued support of our program and we will continue to offer you our very best for years to come. If you have any issues with purchased cattle moving forward, please never hesitate to let me know. Brady Bowles 406-353-7085*

*The Bowles'*

*Brady, Traci, Sydney and Conner  
Jim and Julie*

---

---

# **BID ONLINE**

**Broadcasting on**

**DVAuctions.com & LMAuctions.com**

**High speed internet required for viewing & bidding.**

**PLEASE REGISTER A FEW DAYS BEFORE THE SALE.**

**Questions call**

**DVAuction at(402) 316-5460**

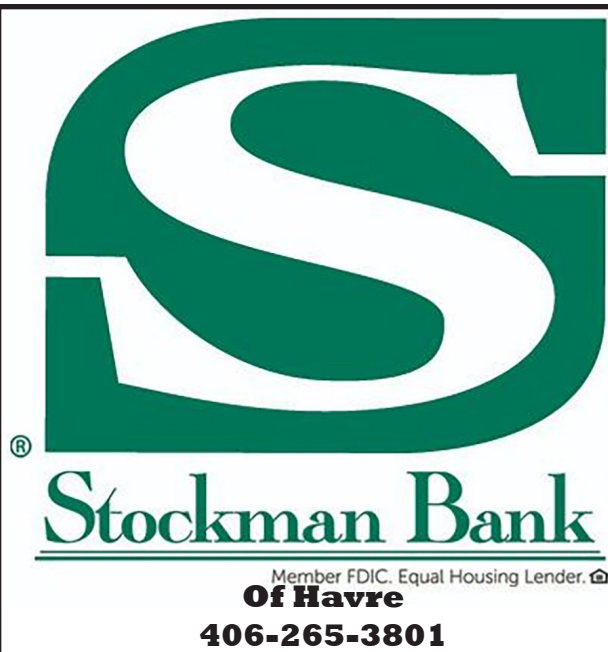
**or**

**Bear Paw Stockyards**

**at 406-357-2286**

***DVAuction***  
*Broadcasting Real-Time Auctions*





**A big THANKS  
to Stockman  
Bank for  
sponsoring  
our lunch  
this year!**



## **25 RANCH RAISED HEIFERS**

Sorted into 5 uniform groups

Ready for green grass

Built on a maternal foundation

Bangs Vaccinated and have had first round of Preg Guard 10

The kind of females our reputation is built upon! Directly from our own replacements, they have been on quality hay and Crytalyx Omega 3 lick tubs throughout the winter. They have also been SafeGuard wormed and poured with Clean-up 2.



## BECKTON SCAMP J067 L7

RAAA #: 4506249 DOB: 02-22-2021 Tattoo: J067/BKT

BECKTON SCAMP E175 N5  
 BECKTON SCAMP G006 C6  
 BECKTON FIREFLY E769 C  
 BECKTON SCAMP J067 L7  
 BECKTON LEGEND Z689 J3  
 BECKTON LANA G406 L  
 BECKTON LANA W748 D

We like to keep Beckton genetics in our herd for their elite calving ease and hardiness. Scamp has been a popular sire around the country and his first crop proves why.



PROS	HB	GM	CED	BW	WW	YW	MILK	ME	HPG	CEM	STAY	MARB	YG	CW	REA	FAT
92	60	32	18	-5.5	60	102	29	3	13	9	16	0.37	0.10	11	-0.04	0.03
47%	32%	65%	3%	4%	53%	41%	20%	51%	22%	20%	39%	63%	68%	91%	86%	73%

## BIEBER DEEP END G222

RAAA #: 4139862 DOB: 02-10-2019 Tattoo: G222/RAB

BIEBER ROLLIN DEEP Y118  
 BIEBER DEEP END B597  
 BIEBER LAURA 158W  
 BIEBER DEEP END G222  
 BIEBER SPARTACUS A193  
 BIEBER KANNA 271D  
 BIEBER KANNA 381X

Deep End has the sort of length of body that we really appreciate. He has daughters doing very well along with elite calving ease and carcass. We didn't even buy him with his carcass in mind, we bought him because his outstanding phenotype and structural integrity. His calves are as long and good as he is too. He is also a very athletic and active breeder.



PROS	HB	GM	CED	BW	WW	YW	MILK	ME	HPG	CEM	STAY	MARB	YG	CW	REA	FAT
138	65	73	16	-3.0	71	117	27	9	13	11	15	0.72	0.04	46	0.64	0.04
6%	26%	8%	19%	29%	23%	22%	41%	74%	34%	5%	45%	10%	33%	6%	4%	77%

## BIEBER STOCKMARKET H516

RAAA #: 4308093 DOB: 02-28-2020 Tattoo: H516/RAB

PIE STOCKMAN 4051  
 BIEBER CL STOCKMARKET E119  
 BIEBER CL ADELLE 475C  
 BIEBER STOCKMARKET H516  
 BIEBER CL ATOMIC C218  
 BIEBER MAIDMARION 325F  
 BIEBER MAIDMARION 189Y

AKA "Topper" H516 has produced some outstanding thickness and eye appeal and is an active breeder. This bull I feel will make one of the biggest impacts on our herd of any bull we have used in recent memory.



PROS	HB	GM	CED	BW	WW	YW	MILK	ME	HPG	CEM	STAY	MARB	YG	CW	REA	FAT
68	50	18	13	-2.4	71	113	24	12	14	9	14	0.33	0.14	32	0.16	0.04
74%	52%	79%	47%	39%	25%	27%	62%	88%	22%	17%	63%	66%	76%	27%	43%	78%

## BIEBER FRANCHISE H521

RAAA #: 4308101 DOB: 03-03-2020 Tattoo: H521/RAB

SPUR FRANCHISE OF GARTON  
 9 MILE FRANCHISE 6305  
 C-BAR ABIGRACE Y11  
 BIEBER FRANCHISE H521  
 BIEBER CL ATOMIC C218  
 BIEBER MAIDMARION 325F  
 BIEBER MAIDMARION 189Y



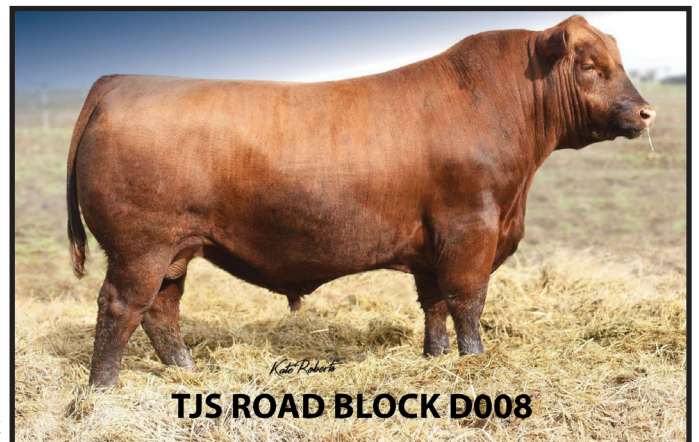
Our dream team went to Bieber Red Angus to find a new herd bull. Sydney, Dad and I, turns out we came home with two. Out of all of the terrific bulls they had we continually picked out sons of the Maidmarion 325F cow. We ended up taking home two bulls out of her and are very happy with the early returns. Franchise is very long and stylish with great feet and tremendous disposition. If you are looking for cattle with tons of eye appeal and power look to further.

PROS	HB	GM	CED	BW	WW	YW	MILK	ME	HPG	CEM	STAY	MARB	YG	CW	REA	FAT
185	37	47	8	-0.2	74	123	32	7	10	7	13	0.37	-0.03	37	0.35	-0.01
54%	71%	32%	92%	75%	17%	14%	10%	65%	79%	58%	67%	59%	14%	17%	18%	8%

## TJS ROAD BLOCK H290

RAAA #: 4340869 DOB: 05-18-2020 Tattoo: H290/TJS

5L BLOCKADE 2218-30B  
 TJS ROAD BLOCK D008  
 TJS RED HONESTY Z258  
 TJS ROAD BLOCK H290  
 BLACK BRYLOR KODIAK 204Y  
 TJS RED HONESTY B186  
 TJS RED HONESTY T769



H290 has tons of muscle shape and a powerful phenotype coming in a medium framed bull. You will notice the extra muscle shape and dimension in his progeny and a very different pedigree to bounce off of.

PROS	HB	GM	CED	BW	WW	YW	MILK	ME	HPG	CEM	STAY	MARB	YG	CW	REA	FAT
58	37	21	9	0.2	75	115	23	4	11	1	16	0.20	-0.10	29	0.62	0.01
92%	78%	18%	93%	86%	8%	17%	74%	57%	56%	99%	37%	94%	3%	28%	2%	25%

## J5 ROCKABILLY 1138-196G

RAAA #: 4431949 DOB: 05-18-2020 Tattoo: H290/TJS

ANDRAS SUMMER SLICK C200  
 SUTH HOME GROWN 196G  
 SUTH TENDER FUSION 6034  
 J5 ROCKABILLY 1138-196G  
 GLACIER PRISM 410  
 J5 MARIGOLD 8086  
 J5 EXA MARIGOLD C19



This a home grown bull that is siring very attractive, dark red cattle that have the muscle and substance to stand up in very competitive pen of bulls. Especially since all of his son's are out of first calf heifers.

PROS	HB	GM	CED	BW	WW	YW	MILK	ME	HPG	CEM	STAY	MARB	YG	CW	REA	FAT
100	68	32	13	-1.6	72	115	28	5	10	8	17	0.38	0.06	27	0.09	0.00
34%	22%	57%	51%	53%	21%	24%	29%	56%	72%	39%	20%	57%	41%	42%	56%	23%





### 7 J5 G222 BIG RIVER 3018

B 3/15/23 A — 100% AR%  
 JJTB / 3018 # 4792562

BIEBER ROLLIN DEEP Y118  
 BIEBER DEEP END B597  
 BIEBER LAURA 158W  
**BIEBER DEEP END G222 4139862**  
 BIEBER SPARTACUS A193  
 BIEBER KANNA 271D  
 BIEBER KANNA 381X

RED SSS SOLDIER 365W  
 J5 A V G. I. JOE 31A  
 BOWLES GLORYLASS 8137  
**J5 31A PINEMARIE 6164 3577526**  
 5L MATS SIGNAL 589-87V  
 J5 87V PINEMARIE 144Y  
 JJTB DB PINEMARIE 878  
 MPPA: 100 Dam Age: 3/30/16

Ratio		Data
Act. BW	108	92
Adj. WW	114	719
Adj. YW	103	1035
SC		
Frame		
EPD Top%		Data
MARB	0.53	27%
YG	0.05	38%
CW	27	35%
REA	0.29	20%
FAT	0.03	64
ADG	0.23	47 1.97
DMI	1.68	68

ProS	HB	GM	CED	BW	WW	YW	MILK	ME	HPG	CEM	STAY
EPD	123	78	45	13	-1.7	66	103	27	-1	11	9 17
Top%	9	8	37	48%	54%	32%	39%	39%	29%	56%	22% 17%

This is one of those extra-long kind that weigh up at the scales and still produce the kind of females that are productive and functional in our environment.

### 10 J5 G222 KING TRITON 3098

B 3/28/23 A — 100% AR%  
 JJTB / 3098 # 4792640

BIEBER ROLLIN DEEP Y118  
 BIEBER DEEP END B597  
 BIEBER LAURA 158W  
**BIEBER DEEP END G222 4139862**  
 BIEBER SPARTACUS A193  
 BIEBER KANNA 271D  
 BIEBER KANNA 381X

TR EPIC ST618  
 TJS EPIC KING X044  
 TJS LAKOTA U8133  
**J5 EK SUNBURST B7 1730657**  
 JJTB GUNSLINGER 405  
 JJTB SUNBURST 776  
 DBL TREE SUNBURST 746B  
 MPPA: 102 Dam Age: 2/21/14

Ratio		Data
Act. BW	90	75
Adj. WW	100	631
Adj. YW	96	971
SC		
Frame		
EPD Top%		Data
MARB	0.49	34%
YG	0.05	38%
CW	32	20%
REA	0.31	18%
FAT	0.02	53
ADG	0.26	32 2.11
DMI	1.73	73

ProS	HB	GM	CED	BW	WW	YW	MILK	ME	HPG	CEM	STAY
EPD	126	73	53	15	-3.1	61	102	26	6	12	10 17
Top%	7	13	22	20%	26%	51%	42%	52%	65%	44%	4% 20%

This is a heifer bull with some rip to him, if you know what I mean. King Triton has muscle, style and structure in a medium and thick bodied package. He really has a look about him, and hits the ProS and HB indeces pretty dang well.

### 8 J5 H521 CLASS ACT 3083

B 3/25/23 A — 100% AR%  
 JJTB / 3083 # 4792552

SPUR FRANCHISE OF GARTON  
 9 MILE FRANCHISE 6305  
 C-BAR ABIGRACE Y11  
**BIEBER FRANCHISE H521 4308101**  
 BIEBER CL ATOMIC C218  
 BIEBER MAIDMARION 325F  
 BIEBER MAIDMARION 189Y

5L DEFENDER 560-30Z  
 5L GUARDIAN 2206-209B  
 5L MATTIE 1693-2206  
**J5 209B DONNA 6081 3577472**  
 J5 MAESTRO 83X  
 J5 83X DONNA B166  
 J5 87V DONNA 153Y  
 MPPA: 101 Dam Age: 3/15/16

Ratio		Data
Act. BW	104	88
Adj. WW	109	690
Adj. YW	97	983
SC		
Frame		
EPD Top%		Data
MARB	0.46	40%
YG	-0.04	9%
CW	19	68%
REA	0.21	34%
FAT	-0.01	8
ADG	0.23	51 1.83
DMI	1.79	77

ProS	HB	GM	CED	BW	WW	YW	MILK	ME	HPG	CEM	STAY
EPD	79	45	34	11	-1.7	64	101	27	-2	8	7 14
Top%	69	63	61	72%	54%	40%	45%	36%	26%	95%	60% 60%

### 11 J5 H521 START UP 3115

B 4/1/23 A — 100% AR%  
 JJTB / 3115 # 4792650

SPUR FRANCHISE OF GARTON  
 9 MILE FRANCHISE 6305  
 C-BAR ABIGRACE Y11  
**BIEBER FRANCHISE H521 4308101**  
 BIEBER CL ATOMIC C218  
 BIEBER MAIDMARION 325F  
 BIEBER MAIDMARION 189Y

VGW EXCELL 663  
 RED EXALTATION 0105  
 RED FRANNY 8011  
**J5 EXA MARIGOLD C19 3549124**  
 5L MATS SIGNAL 589-87V  
 J5 87V MARIGOLD 24X  
 BUF CRK MARIGOLD L172  
 MPPA: 100 Dam Age: 3/10/15

Ratio		Data
Act. BW	96	81
Adj. WW	107	677
Adj. YW	100	1004
SC		
Frame		
EPD Top%		Data
MARB	0.32	74%
YG	0.05	39%
CW	25	45%
REA	0.05	69%
FAT	0	14
ADG	0.22	61 2.04
DMI	1.48	49

ProS	HB	GM	CED	BW	WW	YW	MILK	ME	HPG	CEM	STAY
EPD	101	70	31	13	-2.8	58	93	30	-1	10	8 17
Top%	32	16	66	54%	32%	61%	62%	16%	27%	79%	38% 18%

When you are trying to build something that is going to last you should always start somewhere reliable. Start Up 3115 is that somewhere reliable, building a cowherd with a solid foundation is never a bad idea even for the established herd.

### 9 J5 J067 RASCAL 3052

B 3/20/23 A — 100% AR%  
 JJTB / 3052 # 4792456

BECKTON SCAMP E175 N5  
 BECKTON SCAMP G006 C6  
 BECKTON FIREFLY E769 C  
**BECKTON SCAMP J067 L7 4506249**  
 BECKTON LEGEND Z689 J3  
 BECKTON LANA G406 L  
 BECKTON LANA W748 D

5L MTN TRADER 1410-147B  
 5L MTN TRADER 2943-557E  
 5L TESS 4798-2943  
**J5 DAPHINE 1041 4431781**  
 BUF CRK EASY GOING U032  
 J5 EG DAPHINE 58A  
 J5 L297 DAPHINE 94X  
 MPPA: 98 Dam Age: 3/16/21

Ratio		Data
Act. BW	96	74
Adj. WW	95	598
Adj. YW	98	992
SC		
Frame		
EPD Top%		Data
MARB	0.29	81%
YG	0.11	72%
CW	10	92%
REA	-0.09	91%
FAT	0.03	71
ADG	0.21	63 2.45
DMI	1.07	20

ProS	HB	GM	CED	BW	WW	YW	MILK	ME	HPG	CEM	STAY
EPD	83	65	18	16	-3.8	56	90	26	-1	13	7 16
Top%	62	23	88	16%	17%	69%	67%	46%	30%	26%	42% 30%

The first Scamp in the sale is a real Rascal putting together top tier calving ease along with solid growth and disposition. If you want a sure fire heifer bull that can also produce quality replacements and have some easy fleshing ability besides maybe try out this Rascal.

### 12 J5 ROCKABILLY BOPPER 3012

B 3/13/23 A — 100% AR%  
 JJTB / 3012 # 4792484

ANDRAS SUMMER SLICK C200  
 SUTH HOME GROWN 196G  
 SUTH TENDER FUSION 6034  
**J5 ROCKABILLY 1138-196G 4431949**  
 GLACIER PRISM 410  
 J5 MARIGOLD 8086  
 J5 EXA MARIGOLD C19

LJC MERLIN PRIDE 365C  
 5L MERLIN PRIDE 2963-718E  
 5L REBA 1701-2963  
**J5 LASS 1116 4431773**  
 BHR KING 167  
 BCRR KING'S LASS 314A  
 PAULS LASS 565  
 MPPA: 105 Dam Age: 3/23/21

Ratio		Data
Act. BW	98	76
Adj. WW	112	704
Adj. YW	109	1095
SC		
Frame		
EPD Top%		Data
MARB	0.42	49%
YG	0.01	23%
CW	25	44%
REA	0.23	30%
FAT	0.01	28
ADG	0.26	28 2.43
DMI	1.88	84

ProS	HB	GM	CED	BW	WW	YW	MILK	ME	HPG	CEM	STAY
EPD	100	66	34	13	-1.9	70	112	28	8	12	8 17
Top%	34	23	59	48%	50%	17%	21%	28%	77%	42%	40% 20%

The first Rockabilly is a big bopper with an impressive set of production numbers in a functional and stylish package. This first calf heifer did a tremendous job out of the gates and is the proud mother of one of the best all around bulls in this offering. If you are looking for a bull that produces above average growth with below average birth, then this is a good one to look at.

### 13 J5 G222 DEEPER DAN 3080

B	3/25/23	A — 100% AR%										
JTJB / 3080	#	4792436	Ratio		Data							
			Act. BW	105	85							
			Adj. WW	104	659							
			Adj. YW	105	1055							
			SC									
			Frame									
			EPD Top%		Data							
			MARB	0.56	22%							
			YG	0.06	49%							
			CW	29	30%							
			REA	0.3	20%							
			FAT	0.03	77							
			ADG	0.27	25	2.46						
			DMI	1.67	68							
BIEBER ROLLIN DEEP Y118 BIEBER DEEP END B597 BIEBER LAURA 158W <b>BIEBER DEEP END G222 4139862</b> BIEBER SPARTACUS A193 BIEBER KANNA 271D BIEBER KANNA 381X  5L TRADESMAN 1715-6237 J5 CADILLAC C43 J5 U032 FIREFLY 26Y <b>J5 GLORYLASS 0234 4322459</b> GMRA TRILOGY 0226 BOWLES J5 GLORYLASS 7210 BOWLES GLORYLASS 8137 MPPA: 102 Dam Age: 4/16/20												
ProS	HB	GM	CED	BW	WW	YW	MILK	ME	HPG	CEM	STAY	
EPD	124	71	53	14	-2	65	108	25	8	12	10	17
Top%	8	16	21	37%	48%	34%	29%	56%	77%	33%	6%	24%

He's an attractive fellow and he don't want any FOP g dammit he's a Deeper Dan man. Locked in on the positive side of the growth ratios and set up nicely across the board for economically relevant traits.

### 16 J5 J067 SCAMP 3128

B	4/3/23	A — 100% AR%										
JTJB / 3128	#	4792490	Ratio		Data							
			Act. BW	81	62							
			Adj. WW	94	594							
			Adj. YW	105	1055							
			SC									
			Frame									
			EPD Top%		Data							
			MARB	0.31	76%							
			YG	0.09	65%							
			CW	13	86%							
			REA	-0.04	86%							
			FAT	0.02	62							
			ADG	0.21	67	2.87						
			DMI	1.17	26							
BECKTON SCAMP E175 N5 BECKTON SCAMP G006 C6 BECKTON FIREFLY E769 C <b>BECKTON SCAMP J067 L7 4506249</b> BECKTON LEGEND Z689 J3 BECKTON LANA G406 L BECKTON LANA W748 D  5L MTN TRADER 1410-147B 5L MTN TRADER 2943-557E 5L TESS 4798-2943 <b>J5 MISS ROSE 1121 4431735</b> DCC RIDGE RUNNER 511 DCC MISS ROSE 806 DKK ROSE R09 MPPA: 98 Dam Age: 3/23/21												
ProS	HB	GM	CED	BW	WW	YW	MILK	ME	HPG	CEM	STAY	
EPD	79	55	24	16	-5.3	52	85	27	1	12	7	16
Top%	68	42	80	11%	5%	80%	76%	41%	40%	44%	58%	29%

This Scamp can "Climb the Ladder," going from a 62 lbs birth weight and an 81 ratio to a 1055 lbs 105 YW ratio. I think that's the kind of thing that might make someone some money, less pressure on your heifers with impressive growth. Sounds good to me.

### 14 J5 H516 STOCKMARKET 3108

B	3/29/23	A — 100% AR%										
JTJB / 3108	#	4792634	Ratio		Data							
			Act. BW	91	76							
			Adj. WW	102	642							
			Adj. YW	101	1021							
			SC									
			Frame									
			EPD Top%		Data							
			MARB	0.37	63%							
			YG	0.12	77%							
			CW	24	49%							
			REA	0.05	69%							
			FAT	0.03	69							
			ADG	0.21	62	2.36						
			DMI	1.86	82							
PIE STOCKMAN 4051 BIEBER CL STOCKMARKET E119 BIEBER CL ADELLE 475C <b>BIEBER STOCKMARKET H516 4308093</b> BIEBER CL ATOMIC C218 BIEBER MAIDMARION 325F BIEBER MAIDMARION 189Y  BECKTON WARRIOR U636 J5 BECKTON WARRIOR Z314 N6 BECKTON COCA T454 NX <b>J5 Z314 ST DONNA B177 1730749</b> 5L MATS SIGNAL 589-87V J5 87V DONNA 40Z JTJB 107 DONNA 534 MPPA: 100 Dam Age: 4/9/14												
ProS	HB	GM	CED	BW	WW	YW	MILK	ME	HPG	CEM	STAY	
EPD	88	68	21	16	-4	63	97	24	4	13	10	16
Top%	53	20	84	14%	15%	44%	53%	67%	57%	17%	10%	38%

Proven calving ease genetics from a cow that has paid her dues in the herd. I personally like to have good idea of what to expect from a bull. This bull should be exactly what his personal production and eps's say he should be.

### 17 J5 H521 JULIO 3105

B	3/29/23	A — 100% AR%										
JTJB / 3105	#	4792414	Ratio		Data							
			Act. BW	97	78							
			Adj. WW	95	599							
			Adj. YW	100	1009							
			SC									
			Frame									
			EPD Top%		Data							
			MARB	0.36	65%							
			YG	0.01	21%							
			CW	24	51%							
			REA	0.19	38%							
			FAT	0	21							
			ADG	0.25	36	2.55						
			DMI	1.58	59							
SPUR FRANCHISE OF GARTON 9 MILE FRANCHISE 6305 C-BAR ABIGRACE Y11 <b>BIEBER FRANCHISE H521 4308101</b> BIEBER CL ATOMIC C218 BIEBER MAIDMARION 325F BIEBER MAIDMARION 189Y  LJC MERLIN PRIDE 365C 5L MERLIN PRIDE 2963-718E 5L REBA 1701-2963 <b>J5 NEW GIRL 0103 4322291</b> 5L TRADESMAN X742-356Y J5 356 NEW GIRL B57 LAUBACH BECKY 620 MPPA: 95 Dam Age: 3/24/20												
ProS	HB	GM	CED	BW	WW	YW	MILK	ME	HPG	CEM	STAY	
EPD	91	51	40	12	-2.3	57	97	27	3	10	7	15
Top%	48	50	47	68%	42%	65%	52%	35%	48%	73%	51%	42%

If you ask me which cow family has the most consistent light bw and fertility in one package, this one would certainly be in strong consideration for the best. Both sides of the coin should be equally represented between making replacement heifers combined with calving ease and growth.

### 15 J5 H516 TRUST FUND 3026

B	3/16/23	A — 100% AR%										
JTJB / 3026	#	4792412	Ratio		Data							
			Act. BW	86	69							
			Adj. WW	88	557							
			Adj. YW	91	913							
			SC									
			Frame									
			EPD Top%		Data							
			MARB	0.39	57%							
			YG	0.1	71%							
			CW	28	34%							
			REA	0.17	43%							
			FAT	0.03	77							
			ADG	0.24	40	2.21						
			DMI	2.06	92							
PIE STOCKMAN 4051 BIEBER CL STOCKMARKET E119 BIEBER CL ADELLE 475C <b>BIEBER STOCKMARKET H516 4308093</b> BIEBER CL ATOMIC C218 BIEBER MAIDMARION 325F BIEBER MAIDMARION 189Y  LJC MERLIN PRIDE 365C 5L MERLIN PRIDE 2963-718E 5L REBA 1701-2963 <b>J5 LOLA 0098 4322283</b> BECKTON WARRIOR Z314 N6 J5 Z314 LOLA C52 J5 L297 LOLA 16A MPPA: 97 Dam Age: 3/24/20												
ProS	HB	GM	CED	BW	WW	YW	MILK	ME	HPG	CEM	STAY	
EPD	74	47	27	14	-3.6	65	105	24	10	12	8	14
Top%	76	59	73	27%	19%	33%	36%	64%	85%	29%	30%	57%

A really good sure fire heifer bull that should sire calves with some get up and go.

### 18 J5 H290 BRIDGER 3082

B	3/25/23	A — 100% AR%										
JTJB / 3082	#	4792608	Ratio		Data							
			Act. BW	94	78							
			Adj. WW	101	636							
			Adj. YW	96	964							
			SC									
			Frame									
			EPD Top%		Data							
			MARB	0.35	67%							
			YG	-0.07	5%							
			CW	19	71%							
			REA	0.4	8%							
			FAT	0	23							
			ADG	0.22	62	2.04						
			DMI	1.69	69							
5L BLOCKADE 2218-30B TJS ROAD BLOCK D008 TJS RED HONESTY Z258 <b>TJS ROAD BLOCK H290 4340869</b> BLACK BRYLOR KODIAK 204Y TJS RED HONESTY B186 TJS RED HONESTY T769  5L DEFENDER 560-30Z 5L GUARDIAN 2206-209B 5L MATTIE 1693-2206 <b>JTJB 9069 4117216</b> BUF CRK LANCER-F L297 J5 L297 ESTONIA 92Y JTJB RED ESTONIA 589 MPPA: 102 Dam Age: 3/19/19												
ProS	HB	GM	CED	BW	WW	YW	MILK	ME	HPG	CEM	STAY	
EPD	60	36	25	13	-2.6	63	98	24	0	8	5	15
Top%	90	80	78	45%	35%	41%	51%	65%	33%	95%	91%	53%

I like what is put together in this bull. He is moderate and stout but is smoothly made enough to be a calving ease kind of bull. These Road Block cattle look thick and good. His cow has a good start already raising a top end replacement from the Deep End bull and earning a 102 mppa.

## 19 J5 G222 BLAZE 3101

B 3/28/23 A — 100% AR%  
 JJTB / 3101 # 4792528

BIEBER ROLLIN DEEP Y118  
 BIEBER DEEP END B597  
 BIEBER LAURA 158W  
**BIEBER DEEP END G222 4139862**  
 BIEBER SPARTACUS A193  
 BIEBER KANNA 271D  
 BIEBER KANNA 381X

5L TOPGUN 560-65B  
 LJC ICEMAN 411D  
 LJC LACIE 411  
**5L ADINA 1815-1848 3949013**  
 5L MTN SIGN 435-10Z  
 5L ADINA 384-1815  
 5L ADINA 1402-384  
 MPPA: 99 Dam Age: 2/22/18

Ratio		Data
Act. BW	103	87
Adj. WW	111	699
Adj. YW	109	1099
SC		
Frame		
EPD Top%		Data
MARB	0.62	15%
YG	0.09	60%
CW	34	15%
REA	0.31	18%
FAT	0.03	75
ADG	0.24	45 2.5
DMI	1.7	70

ProS	HB	GM	CED	BW	WW	YW	MILK	ME	HPG	CEM	STAY
EPD	137	79	58	16	-3.4	63	101	26	4	15	9 17
Top%	3	8	15	15%	23%	42%	44%	48%	57%	7%	12% 21%

Blaze is long deep thick and good. Cow has done a good job since joining the herd as an open heifer. It was cold and snowy last year clear into early mid-April and his ears show a bit of that weather. He has done nothing but turn and burn as soon as he got warmed up.

## 22 J5 H521 ROMAN 3103

B 3/28/23 A — 100% AR%  
 JJTB / 3103 # 4792568

SPUR FRANCHISE OF GARTON  
 9 MILE FRANCHISE 6305  
 C-BAR ABIGRACE Y11  
**BIEBER FRANCHISE H521 4308101**  
 BIEBER CL ATOMIC C218  
 BIEBER MAIDMARION 325F  
 BIEBER MAIDMARION 189Y

5L DEFENDER 560-30Z  
 5L GUARDIAN 2206-209B  
 5L MATTIE 1693-2206  
**J5 209B LOLA 7115 3807208**  
 BECKTON WARRIOR Z314 N6  
 J5 Z314 LOLA C131  
 J5 RAM LOLA 169A  
 MPPA: 99 Dam Age: 3/4/17

Ratio		Data
Act. BW	110	93
Adj. WW	99	626
Adj. YW	99	998
SC		
Frame		
EPD Top%		Data
MARB	0.41	52%
YG	-0.02	12%
CW	18	73%
REA	0.16	45%
FAT	0	10
ADG	0.23	51 2.32
DMI	1.73	73

ProS	HB	GM	CED	BW	WW	YW	MILK	ME	HPG	CEM	STAY
EPD	84	56	28	11	-1.3	65	102	27	-4	9	6 15
Top%	61	41	72	77%	61%	35%	42%	42%	20%	89%	78% 41%

A good bull out of a good cow that always seems to have a heavier weighing calf than it appears. I think if you are looking for a cow bull that will bring you in solid weaning weights and still moderate mature frame size this may be a good bull to take a look at.

## 20 J5 H516 STACKED 3124

B 4/3/23 A — 100% AR%  
 JJTB / 3124 # 4792542

PIE STOCKMAN 4051  
 BIEBER CL STOCKMARKET E119  
 BIEBER CL ADELLE 475C  
**BIEBER STOCKMARKET H516 4308093**  
 BIEBER CL ATOMIC C218  
 BIEBER MAIDMARION 325F  
 BIEBER MAIDMARION 189Y

RED SSS SOLDIER 365W  
 J5 A V G. I. JOE 31A  
 BOWLES GLORYLASS 8137  
**J5 31A MATTILDA 6020 3577429**  
 5L MATS SIGNAL 589-87V  
 J5 87V MATTILDA 105Z  
 BUF CRK LOLA L039  
 MPPA: 105 Dam Age: 3/3/16

Ratio		Data
Act. BW	99	84
Adj. WW	109	685
Adj. YW	104	1046
SC		
Frame		
EPD Top%		Data
MARB	0.32	74%
YG	0.09	66%
CW	24	50%
REA	0.11	56%
FAT	0.03	68
ADG	0.24	40 2.25
DMI	2.08	93

ProS	HB	GM	CED	BW	WW	YW	MILK	ME	HPG	CEM	STAY
EPD	78	61	16	12	-1.9	68	107	27	10	12	8 17
Top%	70	30	90	63%	50%	25%	30%	43%	87%	35%	35% 25%

Stacked 3124 is packing some serious cow power behind him. With his extra-long frame and smooth composition, he is sure to build some high production females with maternity and milk. We knew we had the time to not have to push these bulls to gain like they did last year, but the weights and the quality of bulls are as good as ever.

## 23 J5 G222 SUMTIN ELSE 3071

B 3/23/23 A — 100% AR%  
 JJTB / 3071 # 4792532

BIEBER ROLLIN DEEP Y118  
 BIEBER DEEP END B597  
 BIEBER LAURA 158W  
**BIEBER DEEP END G222 4139862**  
 BIEBER SPARTACUS A193  
 BIEBER KANNA 271D  
 BIEBER KANNA 381X

BIEBER ROUGH RIDER 10712  
 BIEBER ROOSEVELT W384  
 BIEBER SHEBA 9602  
**BIEBER TILLY 292B 1687536**  
 BIEBER MAKIN HAY 9913  
 BIEBER TILLY 224W  
 BIEBER TILLY 291S  
 MPPA: 106 Dam Age: 3/23/14

Ratio		Data
Act. BW	105	88
Adj. WW	109	688
Adj. YW	111	1123
SC		
Frame		
EPD Top%		Data
MARB	0.52	29%
YG	0.09	65%
CW	24	48%
REA	0.29	21%
FAT	0.05	94
ADG	0.22	56 2.71
DMI	1.78	77

ProS	HB	GM	CED	BW	WW	YW	MILK	ME	HPG	CEM	STAY
EPD	110	75	36	17	-4.1	64	99	30	4	12	11 17
Top%	20	11	56	7%	14%	40%	48%	18%	54%	36%	4% 23%

Super long bodied with above average weights all the way through our measuring process. Sumtin Else is a bull for someone looking for a smooth made powerful bull with a little more frame.

## 21 J5 G222 DEEP END 3033

B 3/18/23 A — 100% AR%  
 JJTB / 3033 # 4792520

BIEBER ROLLIN DEEP Y118  
 BIEBER DEEP END B597  
 BIEBER LAURA 158W  
**BIEBER DEEP END G222 4139862**  
 BIEBER SPARTACUS A193  
 BIEBER KANNA 271D  
 BIEBER KANNA 381X

5L SIGNATURE 5615  
 5L MATS SIGNAL 589-87V  
 XXX MATTIE 589 HM  
**J5 87V DONNA 153Y 1482770**  
 BJR JR 107  
 JJTB 107 DONNA 534  
 LMB 341  
 MPPA: 105 Dam Age: 4/3/11

Ratio		Data
Act. BW	80	694
Adj. WW	1088	
Adj. YW		1088
SC		
Frame		
EPD Top%		Data
MARB	0.53	27%
YG	0.02	26%
CW	30	27%
REA	0.33	15%
FAT	0.02	45
ADG	0.23	50 2.46
DMI	1.79	78

ProS	HB	GM	CED	BW	WW	YW	MILK	ME	HPG	CEM	STAY
EPD	118	73	45	14	-2	66	103	30	5	12	9 17
Top%	13	14	36	38%	48%	31%	40%	19%	63%	38%	12% 22%

This bull was a twin and that is why he doesn't have ratios, although he was raised by his own mama. Other than that, this guy is deep thick and long with a very good disposition and almost a 700 lbs weaning weight. Going back to one of our Lambrecht cows that mom bought out of their dispersion sale. Maternity and longevity built in to this Deep End bull as well.

## 24 J5 H521 FRANCHISE 3024

B 3/16/23 A — 100% AR%  
 JJTB / 3024 # 4792554

SPUR FRANCHISE OF GARTON  
 9 MILE FRANCHISE 6305  
 C-BAR ABIGRACE Y11  
**BIEBER FRANCHISE H521 4308101**  
 BIEBER CL ATOMIC C218  
 BIEBER MAIDMARION 325F  
 BIEBER MAIDMARION 189Y

BECKTON WARRIOR U636 J5  
 BECKTON WARRIOR Z314 N6  
 BECKTON COCA T454 NX  
**J5 Z314 FAYE 6097 3577480**  
 BFCK CHEROKEE CNYN 4912  
 SUNR FAYE 700  
 ASK FAYE 402  
 MPPA: 99 Dam Age: 3/17/16

Ratio		Data
Act. BW	113	96
Adj. WW	99	622
Adj. YW	105	1056
SC		
Frame		
EPD Top%		Data
MARB	0.48	36%
YG	0.05	43%
CW	28	33%
REA	0.14	49%
FAT	0.01	28
ADG	0.27	26 2.71
DMI	1.66	67

ProS	HB	GM	CED	BW	WW	YW	MILK	ME	HPG	CEM	STAY
EPD	89	46	44	10	-0.6	71	113	26	5	10	5 15
Top%	51	62	38	85%	74%	16%	19%	46%	59%	72%	89% 44%

Franchise 3024 offers tons of capacity and length from a massive tank of a cow whose dam was purchased out of the NILE from the Sun River Program. This guy will produce some deep soggy type calves that should be nice and dark red.







### 43 J5 H290 ROWDY 3157

B 4/28/23 A — 100% AR%  
 JJTB / 3157 # 4792622

5L BLOCKADE 2218-30B  
 TJS ROAD BLOCK D008  
 TJS RED HONESTY Z258

**TJS ROAD BLOCK H290 4340869**  
 BLACK BRYLOR KODIAK 204Y  
 TJS RED HONESTY B186  
 TJS RED HONESTY T769

5L GAME ON 703-50C  
 5L ENERGIZE 3891-313E  
 5L LAKOTA 1715-3891

JJTB 9181 4117386  
 BECKTON WARRIOR Z314 N6  
 J5 Z314 MARI GOLD 6029  
 J5 87V MARI GOLD 24X

MPPA: 102 Dam Age: 4/7/19

Ratio		Data
Act. BW	111	93
Adj. WW	115	728
Adj. YW	94	949
SC		
Frame		
EPD Top%		Data
MARB	0.29	81%
YG	-0.01	15%
CW	24	48%
REA	0.3	20%
FAT	0.01	30
ADG	0.24	45
DMI	1.62	63

	ProS	HB	GM	CED	BW	WW	YW	MILK	ME	HPG	CEM	STAY
EPD	65	42	24	9	1	71	109	20	0	12	2	15
Top%	86	69	80	93%	93%	17%	27%	92%	35%	44%	99%	41%

This is the youngest calf in the sale and I am just going to say that when younger calves weight against the average they can look a little bit awkward in the adjustment.

### 44 J5 J067 SCAMP 3126

B 4/3/23 A — 100% AR%  
 JJTB / 3126 # 4792478

BECKTON SCAMP E175 N5  
 BECKTON SCAMP G006 C6  
 BECKTON FIREFLY E769 C

**BECKTON SCAMP J067 L7 4506249**  
 BECKTON LEGEND Z689 J3  
 BECKTON LANA G406 L  
 BECKTON LANA W748 D

RREDS SENECA 731C  
 FEDDES SENECA D21-9251  
 FEDDES BLOCKANA B56-D21

J5 BESSI 1095 4431929  
 J5 356 GUNSMITH 80A  
 J5 BESSI 8066  
 J5 87V BESSI 13Z

MPPA: 95 Dam Age: 3/21/21

Ratio		Data
Act. BW	83	63
Adj. WW	87	549
Adj. YW	94	945
SC		
Frame		
EPD Top%		Data
MARB	0.33	72%
YG	0.07	53%
CW	16	78%
REA	0.13	51%
FAT	0.03	77
ADG	0.25	36
DMI	1.54	55

	ProS	HB	GM	CED	BW	WW	YW	MILK	ME	HPG	CEM	STAY
EPD	91	64	27	17	-5.5	59	99	28	5	12	9	17
Top%	49	25	74	6%	4%	59%	49%	27%	61%	44%	12%	26%

A Scamp heifer bull that was a twin.

### 45 J5 J067 SCAMP 3134

B 4/7/23 A — 100% AR%  
 3134 / JJTB # 4792464

BECKTON SCAMP E175 N5  
 BECKTON SCAMP G006 C6  
 BECKTON FIREFLY E769 C

**BECKTON SCAMP J067 L7 4506249**  
 BECKTON LEGEND Z689 J3  
 BECKTON LANA G406 L  
 BECKTON LANA W748 D

LJC MERLIN PRIDE365C  
 5L MERLIN PRIDE 2963 718E  
 5L REBA 1701-2963

J5 ESTONIA 1056  
 VGW COLUMBIA 206  
 J5 206 ESTONIA B161  
 J5 L297 ESTONIA 92Y

MPPA:96 Dam Age: 3/18/2021

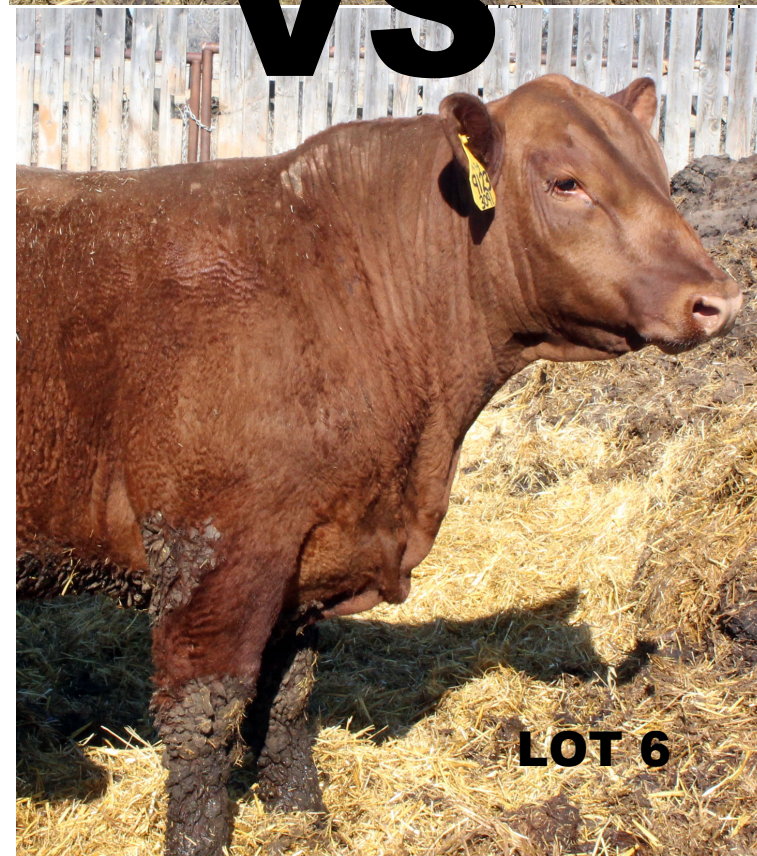
Ratio		Data
Act. BW	50	57
Adj. WW	568	90
Adj. YW	1003	99
SC		
Frame		
EPD Top%		Data
MARB	0.42	49%
YG	0.06	45%
CW	16	80%
REA	0.11	56%
FAT	0.03	66%
ADG	0.27	22
DMI	1.38	40

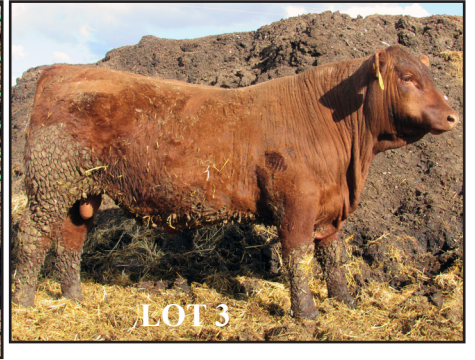
	ProS	HB	GM	CED	BW	WW	YW	MILK	ME	HPG	CEM	STAY
EPD	61	49	43	18	-6.9	54	98	29	6	12	8	15
Top%	49	56	39	4%	1%	74%	51%	21%	67%	39%	28%	44%

A lot of calving ease stacked up here and managed a 99 YW ratio only 1% below his contemporary average from a 50 lbs birth weight.

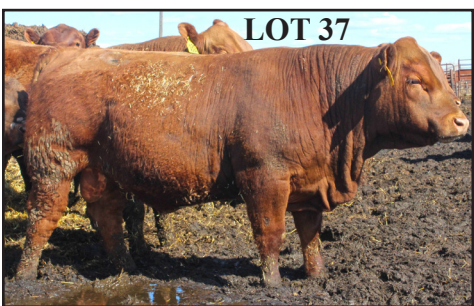
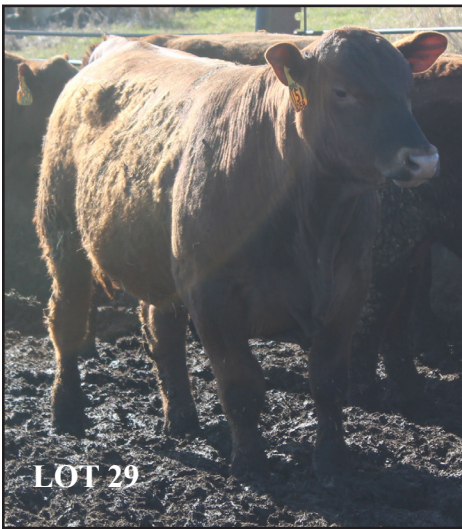
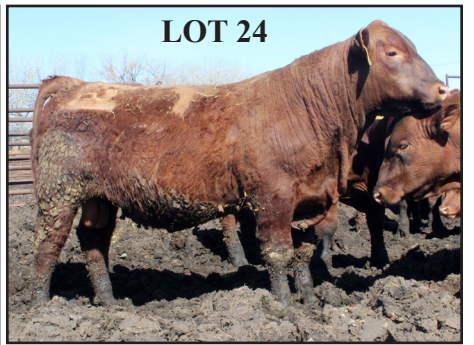


VS











# ***TERMS & CONDITIONS***

**TERMS:** The terms of sale are cash. All settlements will be made with the clerks of the sale immediately following the conclusion of the sale and before any cattle will be released.

**BIDDING DISPUTES:** The auctioneer in charge will settle any disputes as to bids, and his decision on such matters shall be final.

**PURCHASER'S RISK:** Each animal will become the risk of the purchaser as soon as sold. Any animals left in the care of the seller after the sale shall be reasonably cared for and buyer will be advised of any health issues that should arise while in the seller's care.

**ANNOUNCEMENTS:** Changes of information contained in this catalog relating to animals offered for sale will be announced from the auction block and such announcements shall take precedence over printed material.

**REGISTRATION CERTIFICATES:** A certificate of registry and transfer will be furnished on all registered cattle at the buyer's request and after settlement has been made. Certificate will specify exact percentage of Red Angus blood as is applicable. Please be sure to inform the clerk at the time of settlement how you would like the papers transferred.

**IDENTIFICATION:** Each registered animal carries a readable tattoo.

**BREEDING GUARANTEED:** All bulls are guaranteed to be breeders and have passed a fertility and soundness exam. All heifers are guaranteed open. Any claims for refund of adjustment must be made in writing within six months of the sale **RATIO**. In the event a bull is claimed to be a non-breeder, the purchaser may return the bull to the ranch of the seller, if in good condition and complying with the health requirements of the seller's state. The seller will be entitled to six months trial following the return of the animal, in which to prove that the bull is a breeder. The seller will be obligated to offer a suitable and comparable replacement, credit towards the purchase of another bull or refund of the purchase price less any salvage value received by buyer. Such replacement, credit or refund shall in any case be deemed full satisfaction and settlement. If the seller proves the bull to be a breeder, it shall be the obligation of the buyer to take delivery of the animal at the buyer's expense.

**LIABILITY:** Neither owners, sale managers, clerks nor anyone connected with the sale assumes responsibility, legal or otherwise for damage of any kind.

**RETAINED INTEREST:** Seller reserves the right to keep a breeding interest in any bull so designated in the catalog or during the auction. In the event seller elects to collect semen from a designated bull, it will be done at the seller's expense and during such time when purchaser is not using the bull for breeding.

**IMPLIED WARRANTY:** Except for those stated in the terms and conditions there are no warranties, either expressed or implied, as to merchantability or fitness for a particular purpose with the respect to the cattle being sold in this auction. The warranties set forth in the terms and conditions are in lieu of all other warranties, either expressed or implied and the remedies provided therein shall be the sole and exclusive remedy of the buyer or any party claiming through the buyer for any breach of warranty or guarantee therein provided and all other obligations or liabilities.

**CONTRACT:** The above terms and conditions shall constitute a contract between the buyer and seller of each animal sold.



PRSRT MRKT  
US POSTAGE  
PAID  
CHINOOK, MT  
PERMIT NO. 279



**12995 Paradise Valley Road  
Chinook, MT 59523**

**Happy Trails to You!  
For More Information  
or Questions Call  
Brady at 406-353-7085**

